

LHG XL 52 ac

Extremely powerful dual-band backbone / CPE for long-distance connection without downtime

Need a reliable and strong long-distance connection that never goes down? The new **LHG XL 52 ac** will provide just that with its dual-band capability. You can easily setup the 5 GHz channel as the main one with speed up to 600 Mbps and use the 2.4 GHz channel as an automatic backup connection with speed up to 260 Mbps or use both connections at the same time for load balancing.

The powerful 27 dBi 5 GHz / 18 dBi 2.4 GHz antenna will provide connection with link distance up to 40 km+. The grid design ensures protection against wind, it can withstand temperatures from -40 C° to +70 C°. Antenna element is built into the wireless unit – no loss on cables. This device can handle the heaviest loads thanks to the impressive quad-core CPU and 256 MB of RAM. It has a Gigabit Ethernet port, an SFP port, and it is 802.3af/at compliant – you can power it with the smart switches!



Don't let the distance limit your connectivity – choose **LHG XL 52 ac**, a perfect solution for rural areas, farms and huge parks!

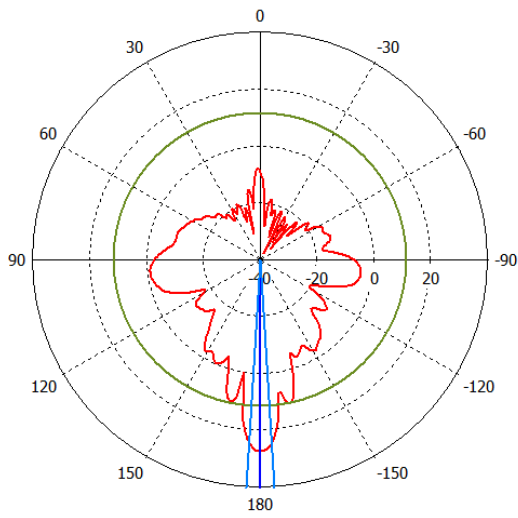
Specifications

Product code	RBLHGG-5HPacD2HPnD-XL	
CPU	Quad-core ARM Cortex A7, 716 MHz	
Size of RAM	256 MB	
Storage	16 MB Flash	
10/100/1000 Ethernet ports	1	
1G SFP ports	1	
Wireless	2.4 GHz	5 GHz
Operating frequency	2412 - 2484 MHz	5150 - 5875 MHz
Supported protocols	802.11b/g/n	802.11a/n/ac
Number of chains	2	
Antenna gain	18 dBi	27 dBi
Antenna beam width	15°	7°
Wireless regulation	Specific frequency range can be limited by country regulations	
PoE in	802.3af/at	
Supported input voltage	12 V - 57 V (802.3af/at and passive PoE)	
Operating temperature	-40° C .. +70° C	
Dimensions	Ø 550 x 291 mm	
Max power consumption	18 W	
License level	3	

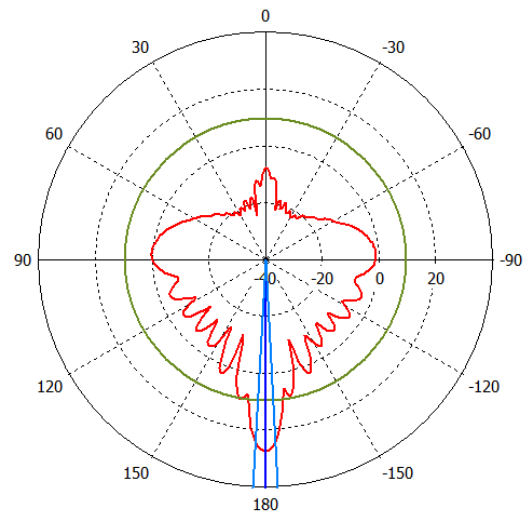
Wireless specifications

Rate (2.4 GHz)	Tx (dBm)	Rx (dBm)	Rate (5 GHz)	Tx (dBm)	Rx (dBm)
1MBit/s	29	-100	6MBit/s	30	-96
11MBit/s	29	-93	54MBit/s	26	-80
6MBit/s	31	-96	MCS0	30	-96
54MBit/s	27	-80	MCS7	25	-75
MCS0	31	-96	MCS9	23	-70
MCS7	26	-75			

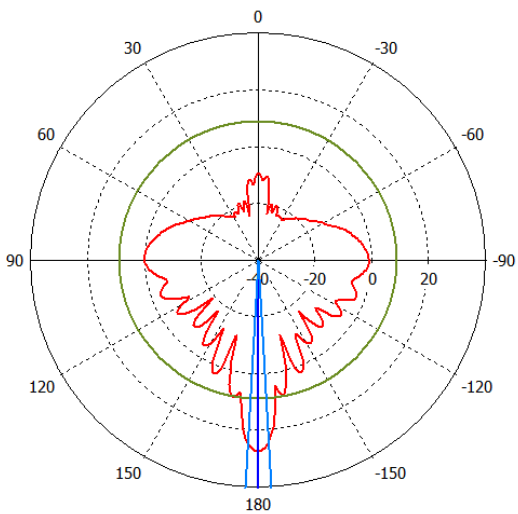
Antenna specifications (5 GHz)



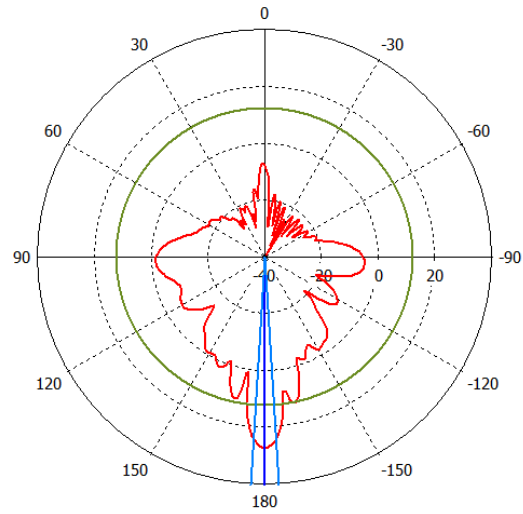
Horizontal 0 deg



Vertical 0 deg

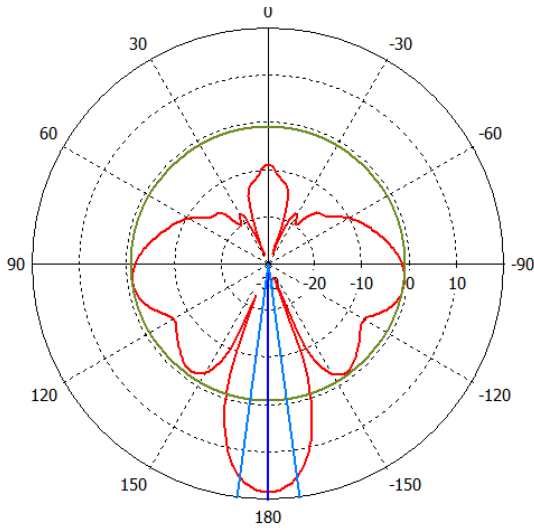


Horizontal 90 deg

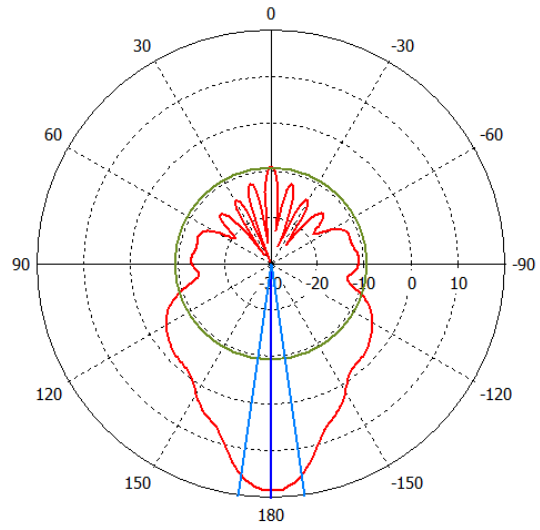


Vertical 90 deg

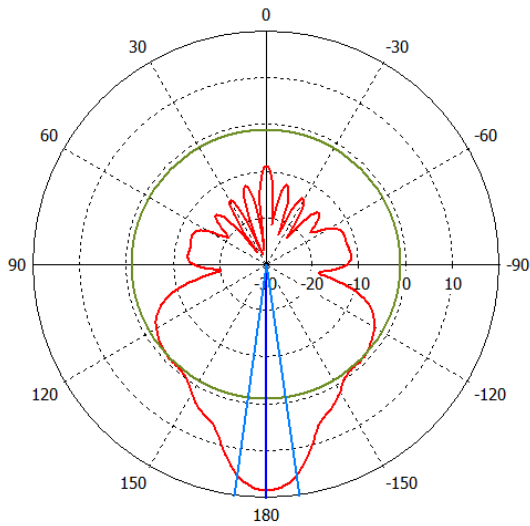
Antenna specifications (2.4 GHz)



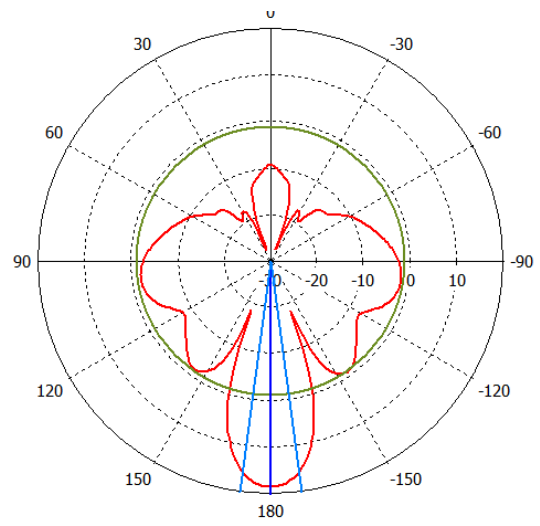
Horizontal 0 deg



Vertical 0 deg



Horizontal 90 deg



Vertical 90 deg

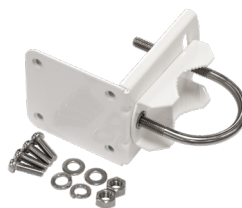
Included parts



24 V 1.2 A
power adapter



Gigabit PoE injector



LHG mount